

newline

SMART SOLUTIONS FOR
NEXT GENERATION CLASSROOMS



Q *SERIES*



newline **Q** SERIES

HIGH PERFORMANCE solution for intelligent classrooms.

65"

75"

86"

4 K

Designed for the classroom, Newline Q Series brings efficiency to your classes and teams. With embedded collaborative tools and a variety of interface themes, Newline Q Series helps teachers to build a dynamic and engaging learning environment. Inspire students to participate and interact with each other, learning proactively.

Ideal Solution For Intelligent Classrooms

A Smooth & Fun touch Experience

With up to 20 points of touch, the Q Series provides a highly responsive, lag-free multi-touch experience.

The display supports Palm Rejection Technology that can differentiate between a stylus or a fingertip and a palm or a wrist, effectively “rejecting” unwanted contact.



20 Points



**Multi-touch
Experience**



**Palm
Rejection**



Ideal Solution For Intelligent Classrooms

An Immersive Audio-visual Experience

The 4K display gives you an ultra-wide 178° viewing angle. No matter where you sit in the room, the image is robust and clear.

Embedded powerful 2*20W 2.0 channel speakers that allow sound and human voice can be delivered clearly in class. The Q Series provides outstanding audio-visual quality for classrooms.



4K Display



Ultra-wide
178°



20W Speakers

Ideal Solution For Intelligent Classrooms

Modular Securable Wi-Fi with Wi-Fi 6 Support/Compatibility

Built-in Wi-Fi 6 module, with a frequency range of 2.4/5 GHz, offers greater capacity, security, efficiency and performance, enabling a stable connection of up to 30 devices, so teachers can interact easily with their students in class.



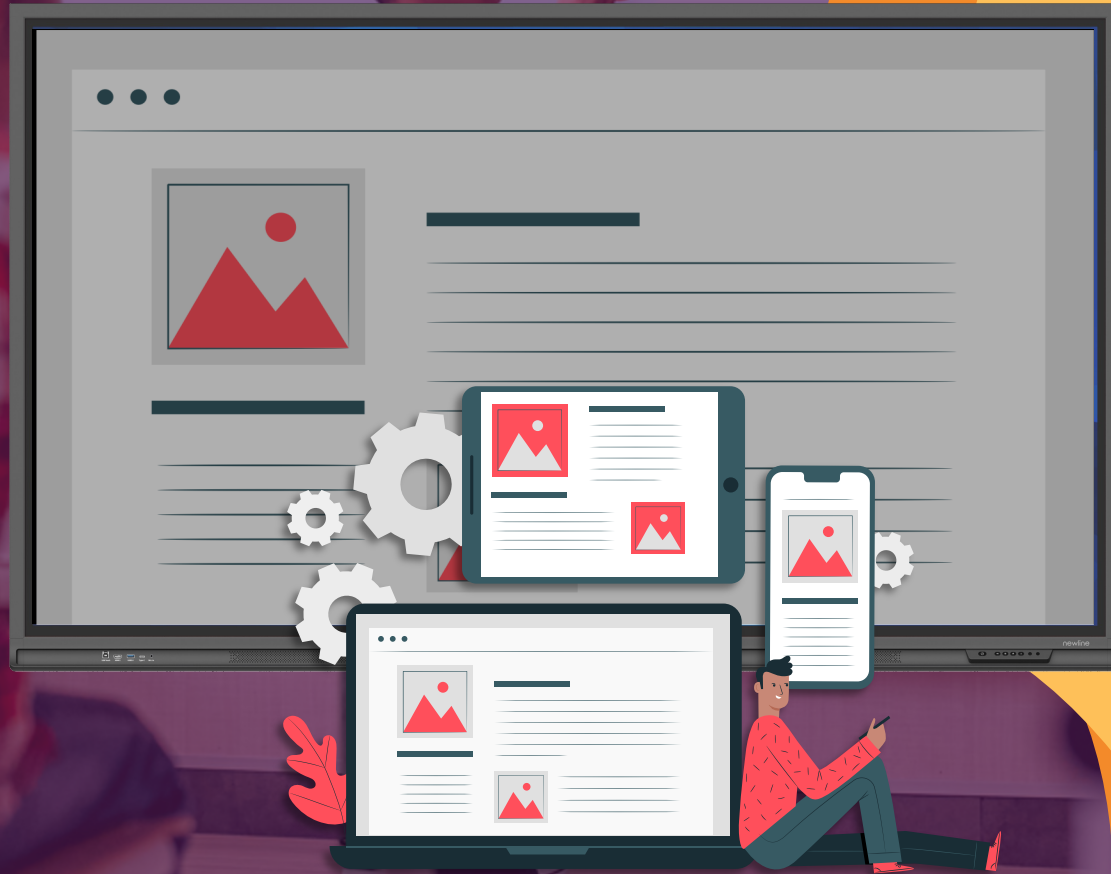
**Built-in
Wi-Fi**



Connectivity



Security

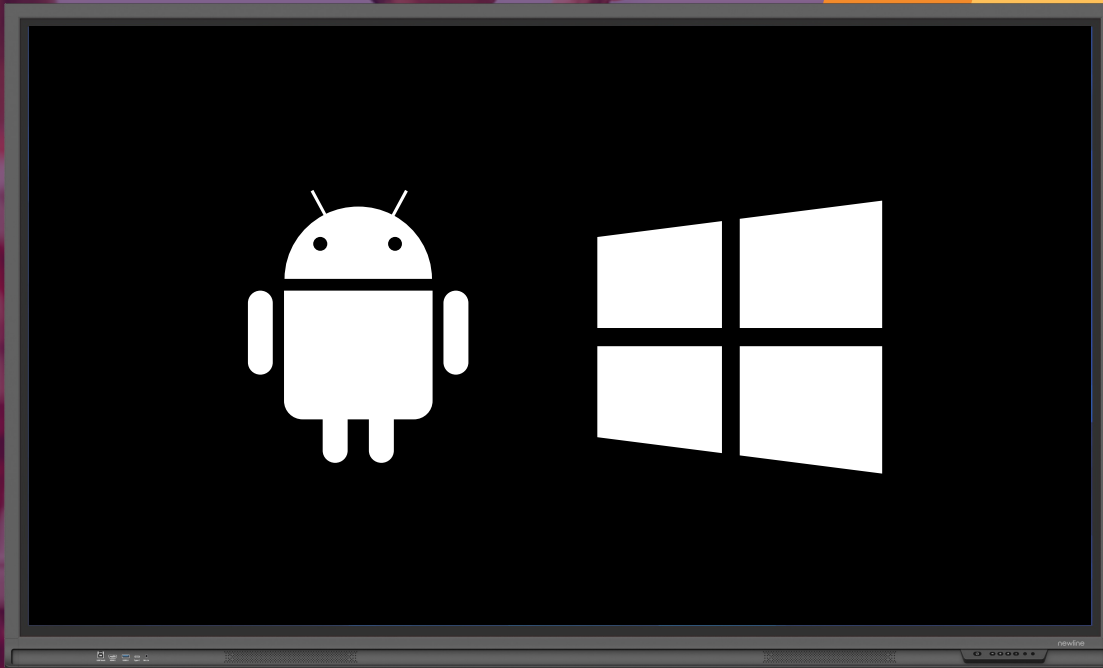


Ideal Solution For Intelligent Classrooms

OS Compatibility

With Windows system and the built-in Android 11, teachers can use any familiar software and application of their choices and access to Google Drive and OneDrive more easily and securely.

The Android system can be upgraded automatically without a hardware upgrade.



Android 11



Windows
System



Disable
embedded OS
Security

*Underdeveloped

PURPOSEFULLY DESIGNED

For The Classroom



Easy Access Hot Keys

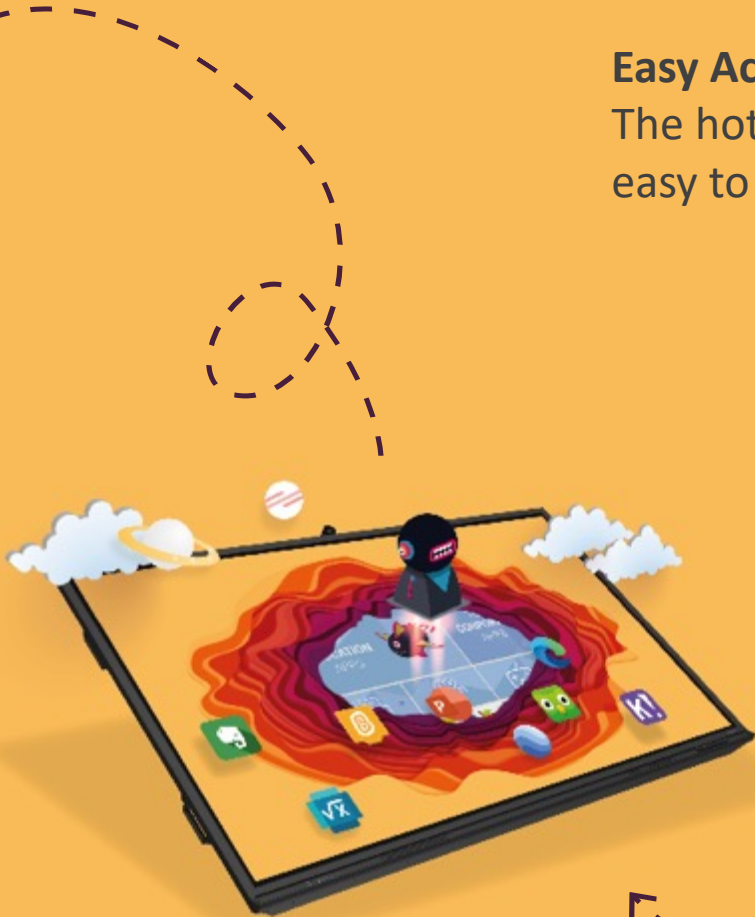
The hot keys are intuitive designed for the control of the most frequently used functions and easy to be pressed with a nature angle.

Full-featured Type-C

Support Type-C cable which achieves power charging, touch, audio and video transmission, and moreover, with supporting up to 65W Power Delivery output on the front port. Plug & play in any way with the powered Type-C connection.

Built-in HDMI Out Port

Provide a connection method to transmit both audio and video signals over a single cable from the display to your own device.





newline

PURPOSEFULLY DESIGNED For The Classroom

Sharp and immersive visual experience

The 4K display with 85% NTSC creates clear and vivid imagery, bringing users a colorful and lifelike visual experience.

Eye Protection

Low Blue Light designed with TÜV Rheinland certified provides an eye-friendly viewing experience.

4K Camera (Optional)

The flexible 4K camera with 120° FOV can be tilted upward and downward within 15° to the angle that works for distance learning and online class.





newline

PURPOSEFULLY DESIGNED For The Classroom



Pen Tray Design

The unique groove design is the perfect place to hold pen and stylus.

OTA Firmware Management

Remotely manage firmware and software updates with no user intervention.

Warranty Policy

Comprehensive warranty with a three-year warranty and technical support.



Newline OPS



Mobile Stand



Stylus



Newline Chromebox



Customize with Accessories

Build your intelligent classroom with Newline accessories including Newline OPS, Newline Chromebox, Mobile Stand, and more.



Display	LCD Brightness
Speakers	Max. Power Output
Touch	Touch Surface Technology
Embedded Operating System	CPU
	RAM
	ROM
	External Memory Android Version
I/O Ports	USB Type-C (PD 65W)
	USB (Touch)
	USB
	USB (Touch)
	USB 3.0 Type-C (No PD)
	USB 3.0 Type-A
	USB Type-A to Android
	WIFI Module Slot WIFI Dongle
Others	Camera Module
	Wi-Fi Module

RS+

$\geq 370\text{cd/m}^2$
15W × 2
Anti-Glare, Tempered Glass
ARMv8 A73 × 2 + A53 × 2
3GB
16GB
32GB (TF Card)
8.0.0
N/A
1 (Type-A)
2 (USB2.0 Type-A)
4 (Type-A)
N/A
1
1 (USB2.0)
N/A
Available
N/A
N/A

New!

Q

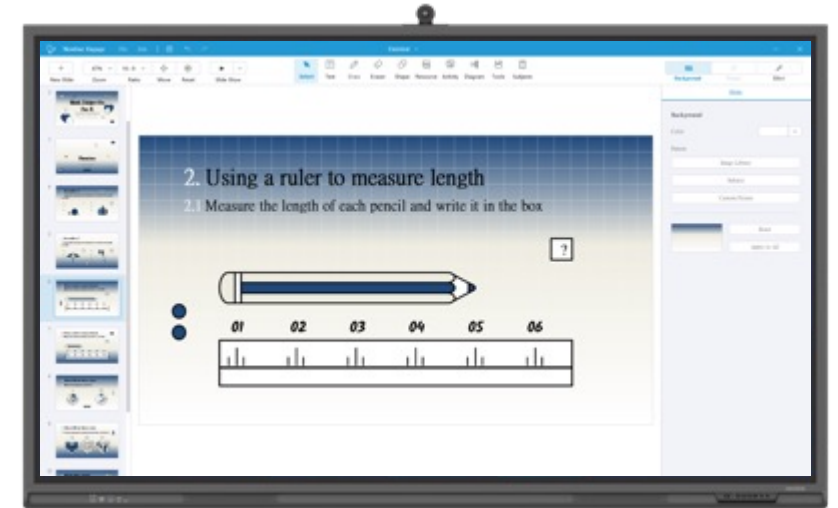
65" / 75" / 86" : $\geq 400\text{cd/m}^2$
20W × 2
Anti-Glare + Anti-Fingerprint + Antimicrobial Tempered Glass
Amlogic 311D2
4GB
32GB
64GB (SD Card)
11
1
1 (Type-B)
1 (USB3.0 Type-A)
3 (Type-B)
1
2
1 (USB3.0)
1
N/A
(Optional) Camera Resolution : 4K@ 30 Hz /UHD Field of View : 120° FOV Lenses IR Camera : 352 x 352 / 30 fps Camera Tile Range : 15°
Support Wi-Fi 6



newline **ENGAGE**

New ways to engage

Newline Engage is the perfect solution for interactive classroom that provides various classroom tools. The versatility of Newline Engage gives both teachers and students more engaging lessons and better-quality education, increasing interactivity and collaboration in the day-to-day instruction.



- Windows-based software.
- Import PPT file or create the contents directly.
- Smart whiteboard and annotation tool.
- Object recognition that differentiates between fingers and pens.
- Provides various tools such as screenshot tools, text, pen kinds, colored inks, sector tools, infinite canvas, diagram tools, diverse backgrounds, and record function for teachers and students to enrich the content of the course.
- Easily save contents as image or PDF file, and even wirelessly transfer these courses out to other devices via QR code.





newline CLASSROOMTOOLS

The Newline Classroom Tools widget is a sticky overlay, perfect for classroom management. Cut down the number of devices teachers need to use throughout the day with this widget.



- **Instructions:** alert the students on how they should be completing their work (in groups, with a neighbor, or alone in silence) using image cues
- **Traffic light:** a simulated traffic light, manually switch between colors
- **Dice:** digital die or dice, perfect math manipulative for a quick demonstration
- **Timer:** our #1 requested tool, use it for tests and classroom activities
- **Stopwatch:** track and clock laps
- **Calendar:** easy access to a simple calendar
- **Zoom in:** emphasize something on the screen with the zoom-in option
- **Spotlight:** draw attention to a single point on the screen while blocking out the rest
- **Curtain:** add a special effect by unveiling the screen with curtains that open from the middle

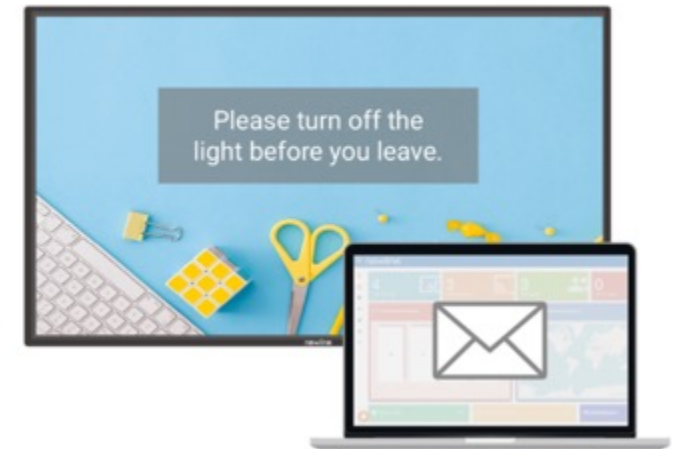
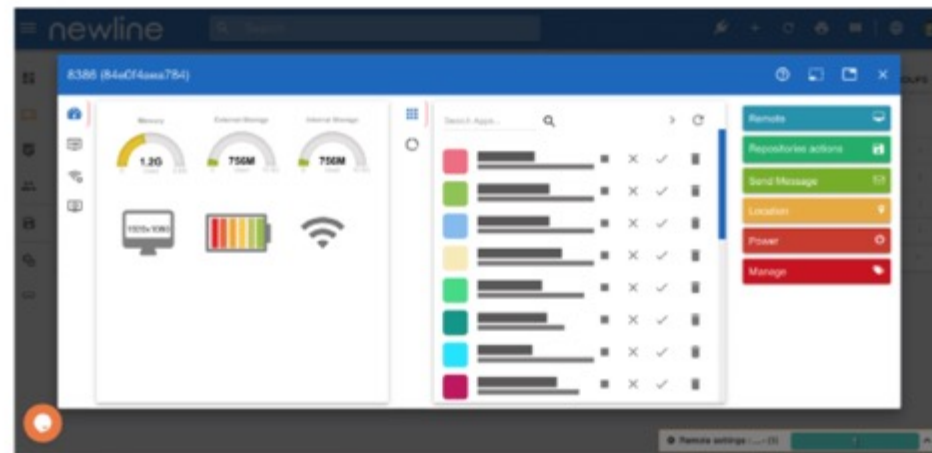




newline DISPLAY MANAGEMENT

A remote display management solution

Centrally manage your Newline interactive displays in any location through a secure and dedicated web portal. Easily manage and deploy apps, configure Newline display settings, use the digital signage features or broadcast messages to all displays.





newline **Q** SERIES



newline **CAST**

Wireless screen sharing

Easily share your screen from any device. Newline Cast is simple to use, with one click you can present wirelessly from any network. Control and annotate from the Newline display or from your own device all with the freedom to walk around the room.



newline **Q** SERIES



newline **BROADCAST**

Content sharing to large classrooms

Tap one button and share your display screen with the students who may not be able to see the display as clearly. They can follow along with the lesson on their own personal screen, reducing eyestrain and making sure everyone gets the most out of the day's lesson.



newline **Q** *SERIES*

NEWLINE INTERACTIVE INC.

950 W Bethany Dr
Suite 330
Allen, TX 75013
TEL: +1 888 233 0868

EUROPE OFFICE

Ronda de Poniente, 16,
Tres Cantos, Madrid,
Spain
TEL: +34 911169178

ASIA PACIFIC OFFICE

Rm. 3, 4F., No. 76, Sec. 2,
Jiafeng S. Rd., Zhubei City,
Hsinchu County 302054,
Taiwan (R.O.C.)
TEL: +886 3 550 4768

INDIA OFFICE

Room No. 203, No.37, TTK
Road, Alwarpet, Chennai,
Tamil Nadu, India, 600018
TEL: +91 44 46945513